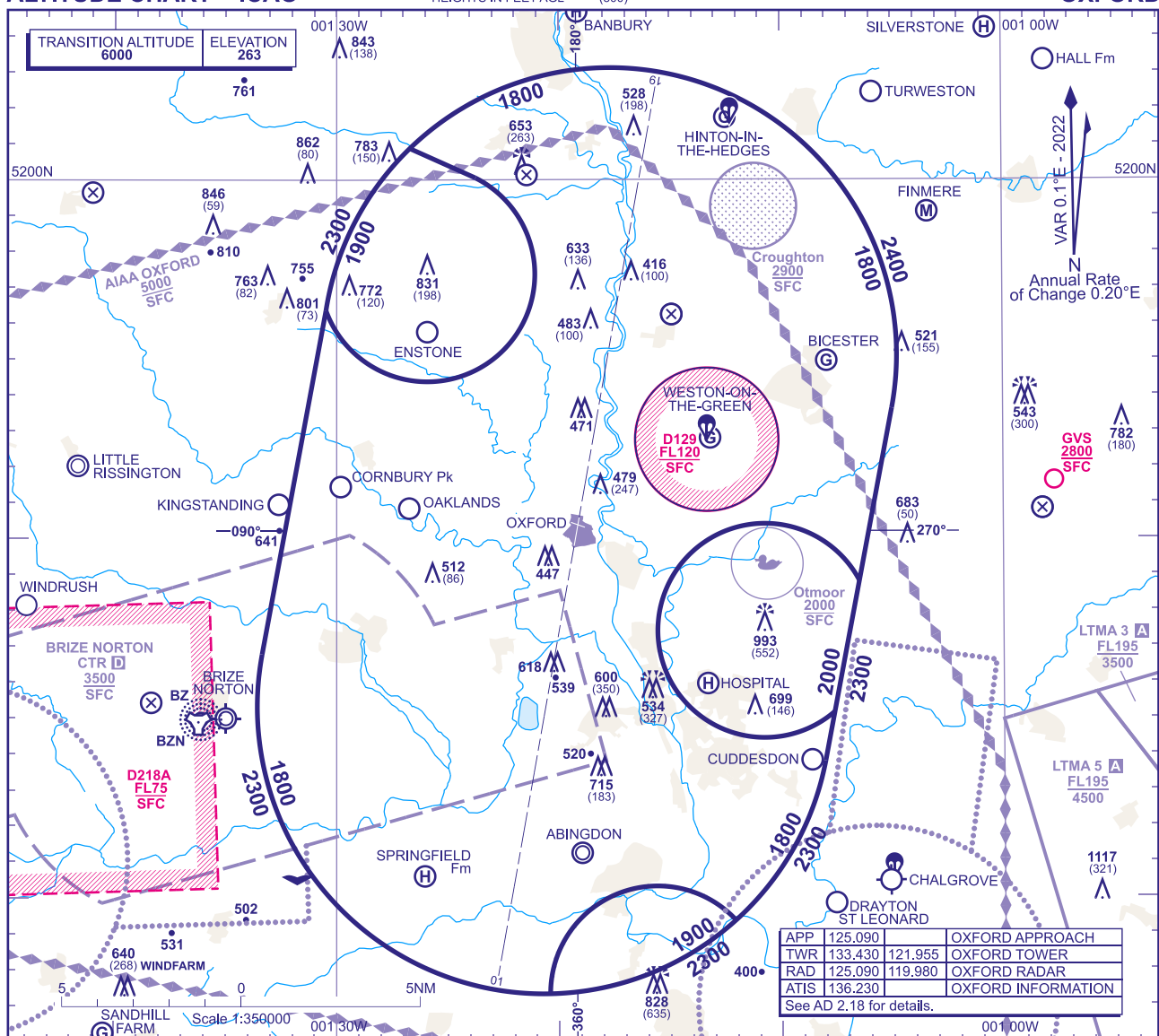


# ATC SURVEILLANCE MINIMUM ALTITUDE CHART - ICAO

BEARINGS, TRACKS AND RADIALS ARE MAGNETIC  
ELEVATIONS IN FEET AMSL 1358  
HEIGHTS IN FEET AGL (800)

OXFORD



## MINIMUM INITIAL ALTITUDE

Within the ATC Surveillance Minimum Altitude area the minimum initial altitude to be allocated by the approach surveillance controller is:

- 1800** in the sector defined by the lateral limits; 520053N 0012642W thence clockwise by an arc of a circle radius 8NM centred on 515508N 0011742W to 515338N 0010500W - 514850N 0010630W thence anticlockwise by an arc of a circle radius 3NM centred on 514726N 0011045W to 514509N 0010738W - 514349N 0010803W thence clockwise by an arc of a circle radius 8NM centred on 514519N 0012041W to 513922N 0011205W thence anticlockwise by an arc of a circle radius 3NM centred on 513720N 0011537W to 513720N 0012025W thence clockwise by an arc of a circle radius 8NM centred on 514519N 0012041W to 514647N 0013321W - 515622N 0013029W thence anticlockwise by an arc of a circle radius 3NM centred on 515723N 0012555W to 520004N 0012344W - 520053N 0012642W.
- 2000** in the sector defined by the lateral limits; 514850N 0010630W - 514509N 0010738W thence clockwise by an arc of a circle radius 3NM centred on 514726N 0011045W to 514850N 0010630W.
- 1900** in the sector defined by the lateral limits; 513720N 0012025W thence clockwise by an arc of a circle radius 3NM centred on 513720N 0011537W to 513922N 0011205W thence clockwise by an arc of a circle radius 8NM centred on 514519N 0012041W to 513720N 0012025W.
- 1900** in the sector defined by the lateral limits; 520053N 0012642W - 520004N 0012344W thence clockwise by an arc of a circle radius 3NM centred on 515723N 0012555W to 515622N 0013029W - 515636N 0013024W thence clockwise by an arc of a circle radius 8NM centred on 515508N 0011742W to 520053N 0012642W.

## OUTSIDE THE DESIGNATED ATC SURVEILLANCE MINIMUM ALTITUDE AREA

The minimum altitude to be allocated by the approach surveillance controller will be either the Minimum Sector Altitude, or **1000** above any fixed obstacles:

- within 5NM of the aircraft, and
- within the sector 15NM ahead of and within 20° either side of the aircraft's track\*.

## LOSS OF COMMUNICATION PROCEDURES

**Initial Approach** Continue visually or by means of an appropriate approved final approach aid. If not possible proceed at **2200**, or last assigned level if higher, to **NDB(L)DME OX†**.

**Intermediate and Final Approach** Continue visually or by means of an appropriate final approach aid. If not possible follow the Missed Approach Procedure to **NDB(L)DME OX†**.

† In all cases where the aircraft returns to the holding facility the procedure to be adopted is the Radio Failure Procedure detailed at ENR 1.1.3.4.

## GENERAL INFORMATION

- Levels shown are based on QNH.
- Only significant obstacles and dominant spot heights are shown.
- The minimum levels shown within the ATC Surveillance Minimum Altitude Area are in conformance with the Standard European Rules of the Air - SERA.5015.
- Minimum Sector Altitudes are based on obstacles and spot heights within 25NM of OX NDB.
- Controlled airspace with a base in excess of **5000** or **FL55**, as appropriate, is not shown.
- This chart should only be used for the cross-checking of assigned altitudes whilst in receipt of an ATC Surveillance service.**

CHANGE (6/25): WCO NDB, THAME PARK & CHALLOW HILL FARM REMOVED.